

Flakie

music by
Joseph Benoit

book & lyrics by
Jenne Wason





about the show

North Pole Elf Flakie has big dreams of becoming a World famous King Tower Kickette. She runs off to New York City with Dancer the Reindeer to follow her dreams, only to find she has a "small" problem with the height requirement.

Flakie makes friends with a Kickette named Loretta, meets all kinds of zany New York characters, and gets chased by the North Pole posse (including one very cute but very sleepy Elf who has a crush on her).

Flakie has high kicks and even higher aspirations...





cast & production notes

This quirky holiday musical comedy in two acts is perfect for an all-ages cast where youth play elves and adults/teens play everyone else, but it works for all-student or all-adult groups as well. Size of cast is very flexible (16-50+ performers) with tons of fun roles that can be doubled but don't have to be!

Locations vary from NYC highlights to the North Pole workshop.





Flakie

the characters: elves

FLAKIE – The North Pole Elf who loves to dance and dreams of being a King Tower Kickette. Mezzo with a bright elfish tone. A true triple threat.

HOHUMS – A Slacker Elf who can't stay awake –until he meets Flakie. Warm Baritenor.

JINGLEBERRY – A Slacker Elf who manipulates everyone to do everything for him so he doesn't have to. Tenor.

P – A Slacker Elf with more attitude than a Beverly Hills teenager. Alto.

MCELFIN ELF – The sharp-talking Head Elf. Non-singing.

CHORUS OF HAPPY TAPPY ELVES





the characters: non-elves

LORETTA – Flakie’s friend and mentor – A Kickette who falls in love too hard for guys who don’t deserve it. Strong mezzo with belt.

DANCER – The Second Reindeer (third if you count Rudolph), who becomes Flakie’s sidekick. Soprano.

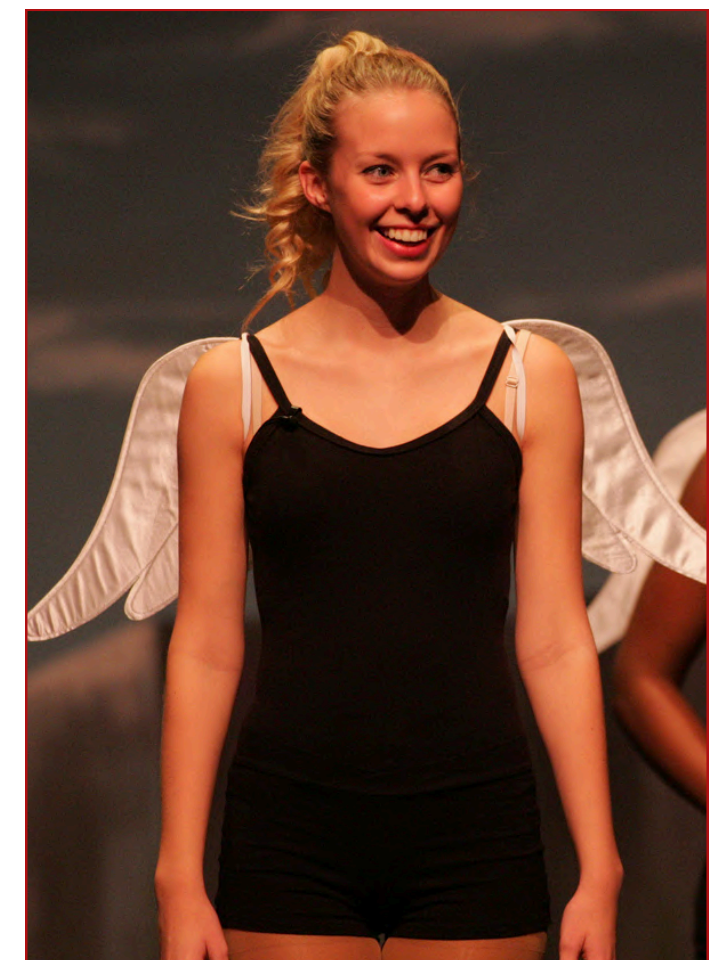
EMIL – Assistant Stage Manager for the Kickettes and The-Sweetest-Guy-in-the-World Who-Would-Never-Ever-Break-Your-Heart. Tenor.

JAX – Loretta’s boyfriend who doesn’t deserve it. Non-singing.

STAGE DOOR CHARLEY – The New York Old School security guard at the stage door of King Tower Music Hall. Baritone with character.

CHORUS OF NON-ELVES – to play various roles including:

- Sugar Plum Fairy Godmother – Sparkly, eccentric, and occasionally aggressive Fairy Godmother to all Christmas Folk.
- Terrrrribly Loungey Singer
- Santa/The Director who looks Like Santa
- Parade Clown
- Jaded New Yorkers, Diner Patrons, Dinner Cruise Performers, Reindeer, the World Famous King Tower Kickettes, and many more





the music

FLAKIE includes a mix of holiday classics and brand new musical theatre tunes by Joseph Benoit & Jenne Wason. Pop, jazz, doo-wop tango, rock, and of course a power ballad round out the musical styles in this hilarious contemporary family show.

To hear a few songs from the musical, check out the [**Flakie Song Sampler**](#).





the writers: benoit & wason

Together Joseph Benoit (Music) and Jenne Wason (Book & Lyrics) created *Flakie* as well as *Winesday: The Wine Tasting Musical*, which had a hit run Off-Broadway in 2024 and has played sold-out and extended runs in various venues in Canada.

Jenne was trained at NYU - Tisch (BFA - Drama) and the BMI Lehman Engel Musical Theatre Workshop. In collaboration with composer Alan Cancelino, Jenne wrote *The White Rose* (New York Musical Theatre Festival; readings - York Theatre Company, Public Theater; workshop - Wright State University) and *Bingo City* (NYMF). She is both a Kleban Award finalist and two-time semi-finalist for the O'Neill National Music Theatre Conference.

Joseph Benoit is a bilingual singer-songwriter and composer with a BMus from University of Windsor. Early in his career, he was recruited by Radio-Canada Windsor to compose and perform for local and national broadcasts. He's the leader of the French-Canadian pop band *awi*, which has performed and recorded throughout Ontario and into Québec, and was also a finalist in Radio-Canada's Ontario Pop competition.





for production

Flakie was originally developed into production by Theatre Kent in Southwestern Ontario and performance rights are available. Author connections are possible (if interested) and the script, score and orchestrations are production-ready!

The orchestra can be flexible but is currently written for trumpet, french horn, trombone, tuba, piccolo, flute, clarinet, oboe, alto sax, tenor sax, baritone sax, electric guitar, bass, drums, percussion, piano, and synth.





contact

We're happy to answer any questions you have.
We're confident you are going to love *Flakie*!

flakiemusical@gmail.com

571-502-1845

– Jenne Wason & Joseph Benoit

